



CXC 5TH MARCH PART 1

PORTUGAL

Collaborate to Grow MOBINOV

01

01

Collaborate to Grow
MOBINOV
PORTUGAL

02

Cluster Automóvel
MOBINOV
PORTUGAL

03

Tecnologia & Inovação
MOBINOV
PORTUGAL



VISION

Portugal with a **competitive and recognized Automotive Industry** in terms of the development of technological solutions and the industrialization of components, modules, systems and vehicles.

MISSION

To promote a **sustainable growth** and **competitiveness** of the national automotive industry through greater cooperation and coordination between companies, associations, public administration bodies and SCTN entities.





Value chain of the automotive sector

Suppliers and Accessories

Component Manufacturers

Core, intermediary or subsidiary products

Equipment and machinery

Molds and tools

Automotive accessories

Manufacturers

Motor vehicle
manufacturers

Vehicle transformers

Coachworks and
tows

Distribution and Retail

Retail distribution
and sales points
of automotive
vehicles

After-sale

Products and
services
associated with
the after-sale life
cycle of
automobile



Activities connected to the Automotive Industry Cluster



MOBINOVA :: Automotive Cluster
PORTUGAL

An abrangent and representative cluster





5 of the
World's
biggest OEM
have plants in
Portugal

- VW, **Toyota**, PSA,
Daimler, **Mitsubishi**

7 of the
World's 12
biggest Tier
One suppliers
have plants in
Portugal

- Bosch, Continental,
Denso, **ZF**,
Delphi/Aptiv,
Faurecia, Lear

EACN Partnership Members



Situation: 15 January 2020



MOBINOV :: Automotive Cluster
PORTUGAL

OUR MEMBERS





MOBINOV :: Automotive Cluster
PORTUGAL

An abrangent and representative cluster

Associations



SCT entities



Superior education Institutions



TÉCNICO LISBOA



universidade
de aveiro

Training academies



Companies



RENAULT CACIA

Manufacturers



CaetanoBus

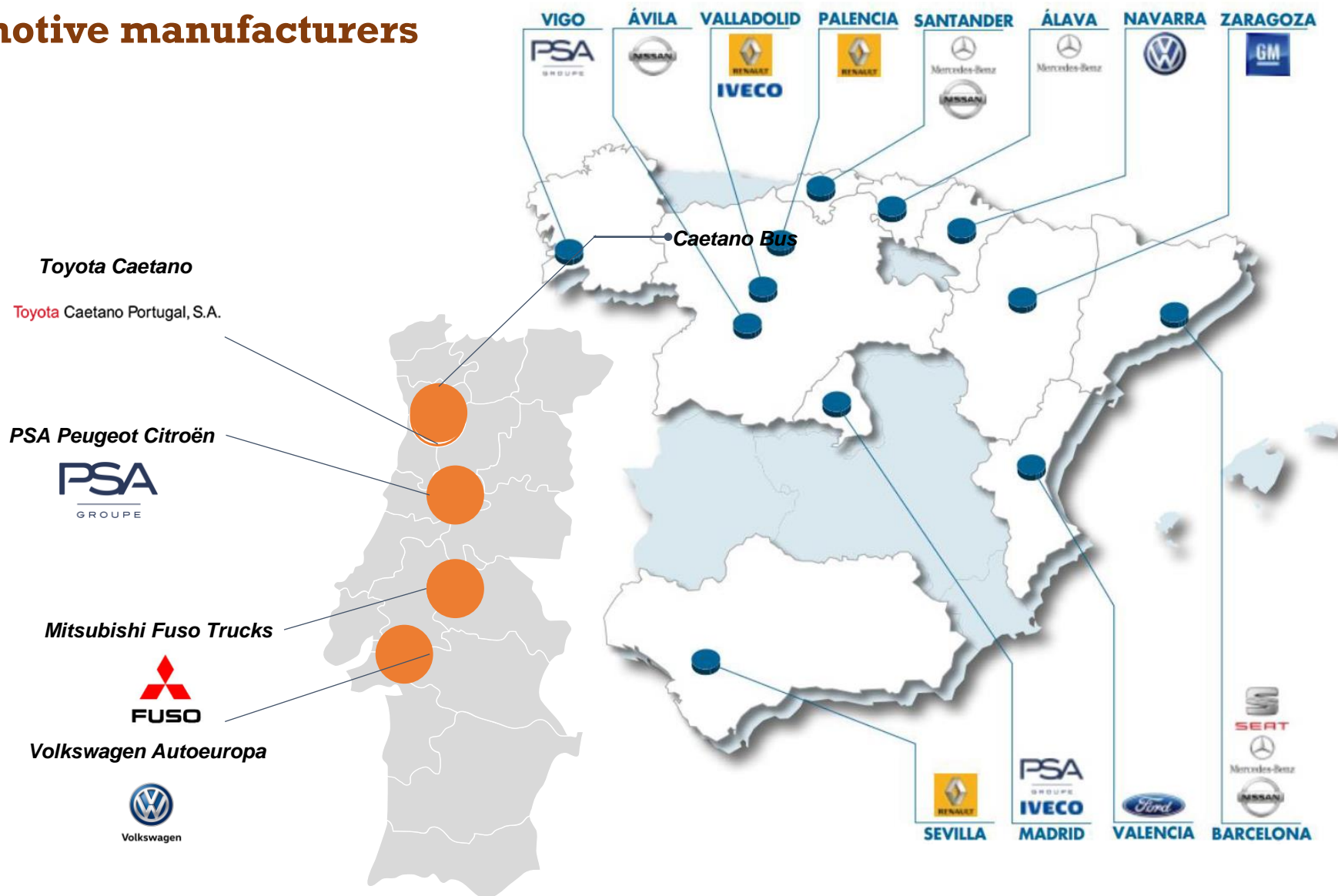




MOBINOV :: Automotive Cluster
PORTUGAL

A national leading Industry

Automotive manufacturers

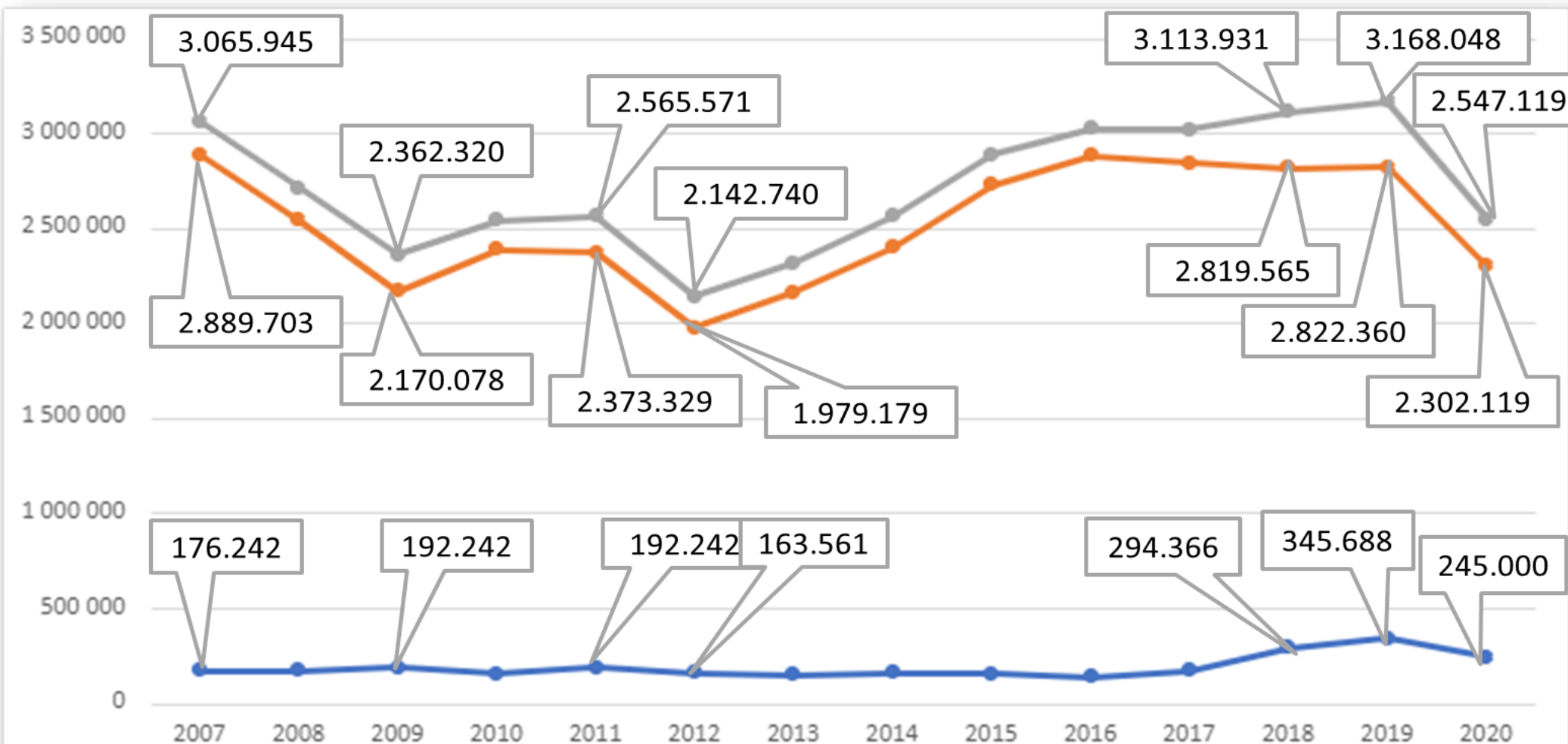




Vehicles Made in Portugal



Iberian Peninsula | Automotive Production | (x 1.000 vehicles)





Impact of the pandemic COVID-19 on the Cluster

Summary of the Impacts of the pandemic on the cluster - Impact 2020

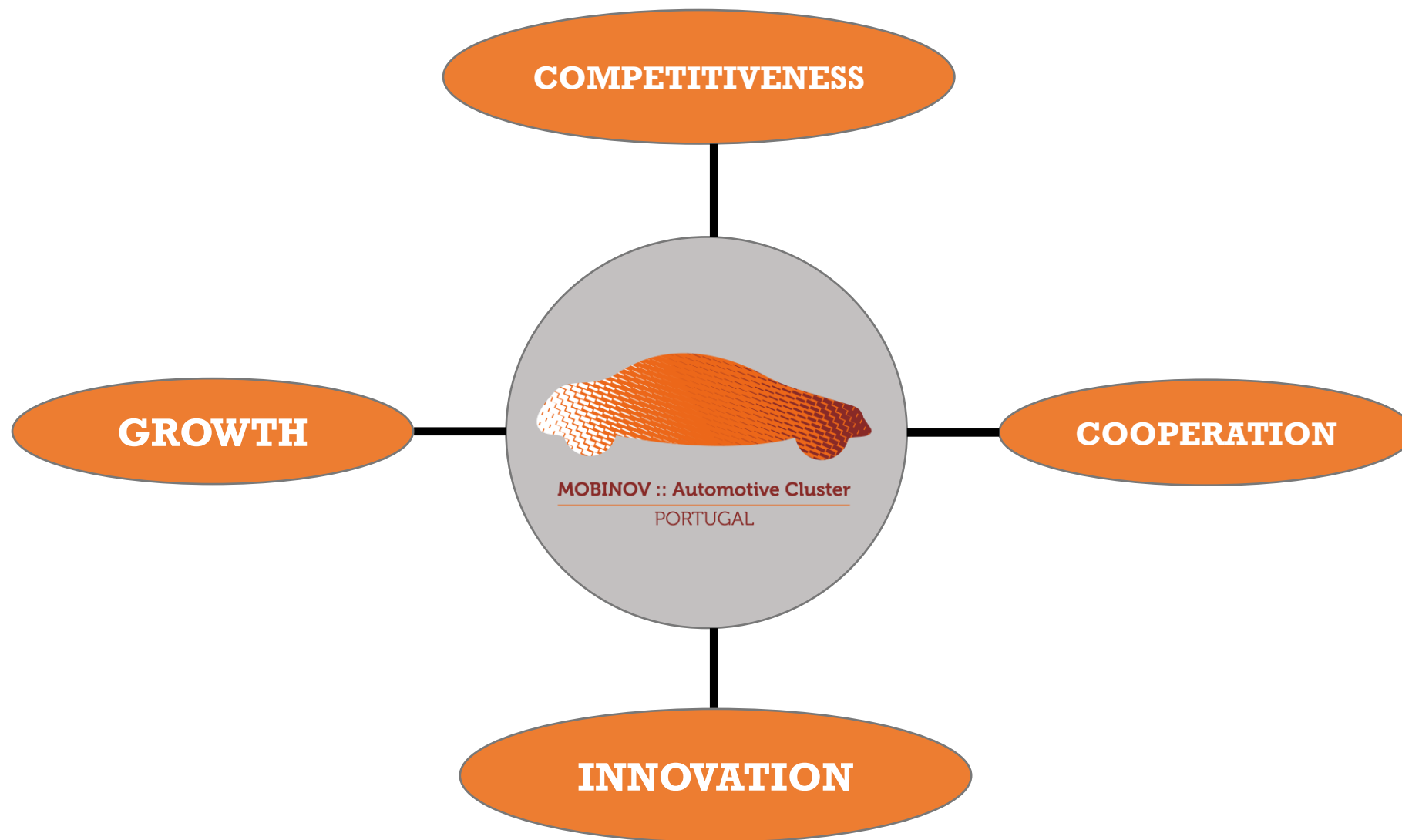
Impact 2019

	Sharp decline in Turnover due to lower demand in Europe	~ 12550 M€	~15.900 M€
	Sharp drop in Exports following the decrease in the main destination markets	~12.450€	~15.750 M€
	Strong reduction in Investment to manage short-term working capital	~550 M€	~1.000 M€
	Increased Employment rigidity justified by business support measures and the resilience of the sector	~ 87.000 Employees	~ 90.000 employees



MOBINOV :: Automotive Cluster
PORTUGAL

Priority Areas





- 1. Bringing component manufacturers and suppliers closer together**
- 2. Access to Reserved Area**
- 3. Access to updated studies**
- 4. Participation in Working Groups**

- 5. Support in the preparation of PT2020 and H2020 calls**
- 6. Integration in PT2020 and H2020 projects**
- 7. Support in the integration and constitution of European consortiums**

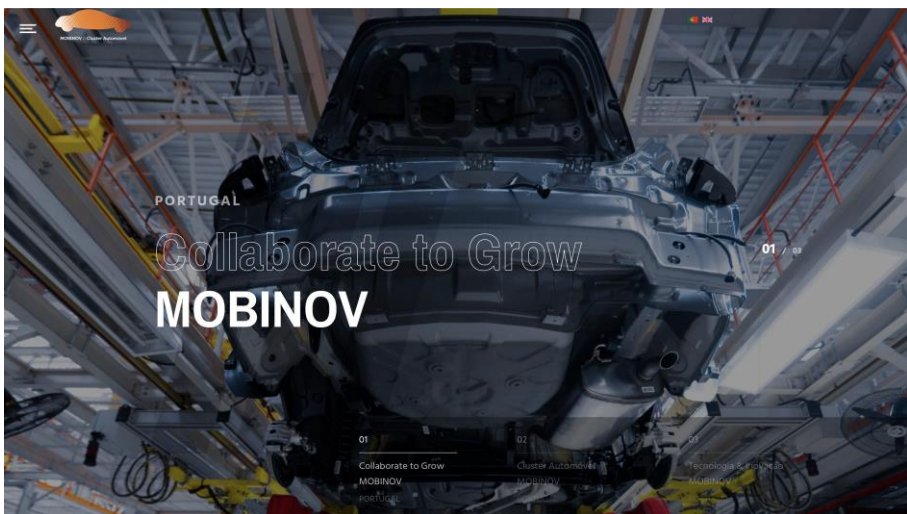
- 8. Networking**
- 9. National and international visibility**
- 10. Weekly newsletter**

- 11. Participation in the construction of public policies for the cluster**
- Workshops and thematic seminars**
- 12. Lobby**

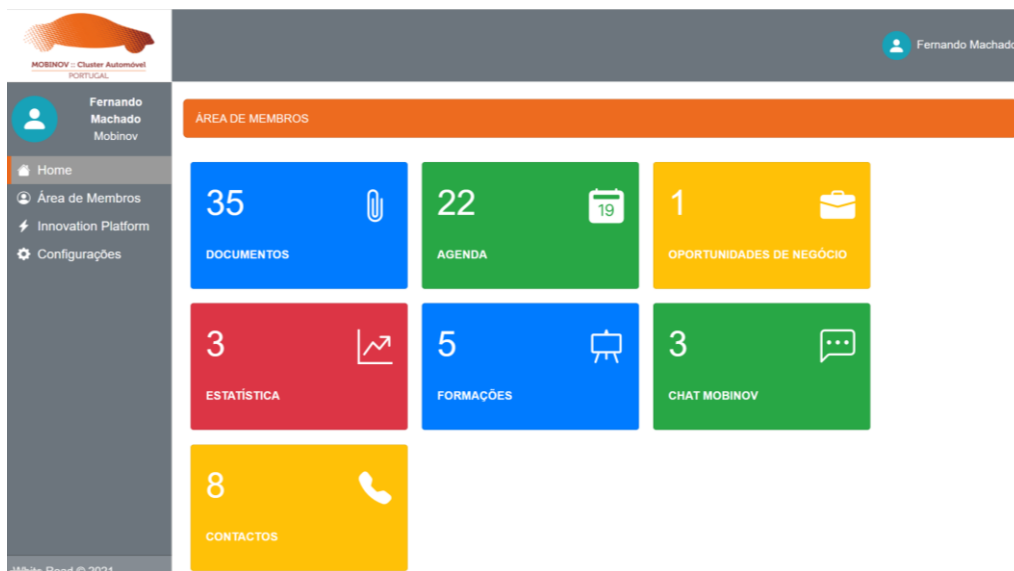


MOBINOV :: Automotive Cluster
PORTUGAL

WEBSITE



Members Area



STRATEGIC MAP



MOBINOV :: Automotive Cluster
PORTUGAL

AREAS OF EXPERTISE



Networking



Innovation



Human
Resources



Lobby



Competitiveness



Partners



Portugal
Ventures



IAPMEI
Placetos para o Crescimento



Manufacturing



UNIÃO EUROPEIA
Fundo Europeu
de Desenvolvimento Regional

Automotive Cluster Dynamization



Grow
Mobinov



Automotive Trend Watch



National Supplier Qualification Programs



Qualification of Human Resources



Support to Technological Development

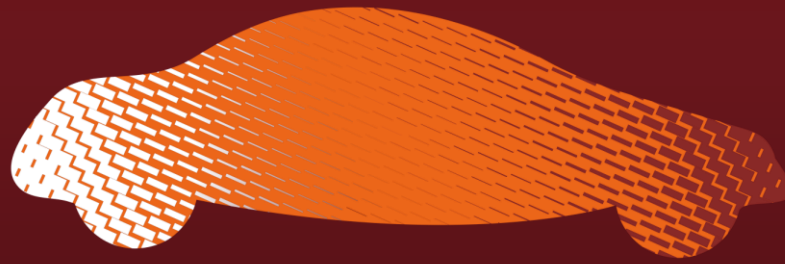


Support to internationalization and FDI



Support to Public Policies





MOBINOV :: Cluster Automóvel

PORTUGAL

Thank you for your attention!

Please feel free to contact us for any additional information

- **Av. D. Afonso Henriques 1825, 4450-017 Matosinhos, Porto, Portugal**
- **Tel: +351 22 016 48 98 | Tlm: +351 918 136 259**
- **www.mobinov.pt**
- **geral@mobinov.pt**