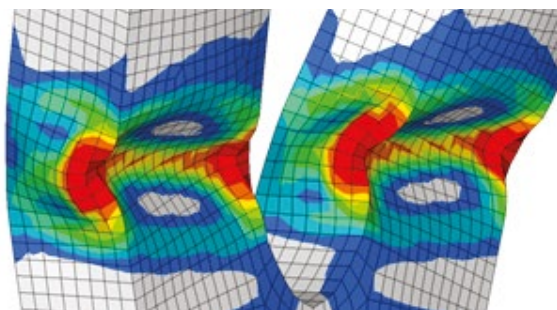


Invenco is an engineering design and calculation company, evolving since 2009. We provide services in all areas of design and strength calculations related to bodies, suspensions and components of automotive and railway vehicles as well as construction machinery and equipment. Invenco employees have extensive experience in the R&D for the rail industry. Our offer:

1. Mechanical engineering branch (main):

- team specialized in road and rail vehicle body engineering with strong CAE background,
- deep crashworthiness & structural design knowledge,
- conceptual design of structures, analytic and CAE driven,
- layered composite design & analysis,
- fatigue analysis of steel and aluminium alloy structures (DVS 1612, DVS 1608, FKM),
- bolt connection analysis (VDI 2230),
- competences in other CAE fields including: suspension analysis, thermal, vibration and CFD, packaging, ergonomics,

- mechanical systems analysis,
- CAD design (structures, mechanisms, body parts, and others).



2. Mobile robotic systems:

- control algorithms (Model Predictive Control, PID),
- computer Vision (OpenCV, PCL, Convolutional Neural Networks).

3. Team experience in mechanical engineering:

- conceptual design of crash absorbing systems and bodies, FEM analysis for crash, fatigue, vibration and statics, CAD works devoted to rolling stock,
- automotive engineering (mass production),
- conceptual design of crash absorbing systems and bodies, FEM analysis for crash, fatigue, vibration and statics, CAD works devoted to small series road vehicles.